

DuraTite® and Ever-Lok® Locking Connections

Standard: 10–50 Amp, Maximum 600VAC or 250VDC

Heavy Service: 30–100 Amp, Maximum 480VAC or 250VDC

Midget: 10–20 Amp, Maximum 250VAC or 250VDC

When an Ever-Lok® connection is made, it is a mechanical attachment that will not pull apart unless it is unlocked by hand.

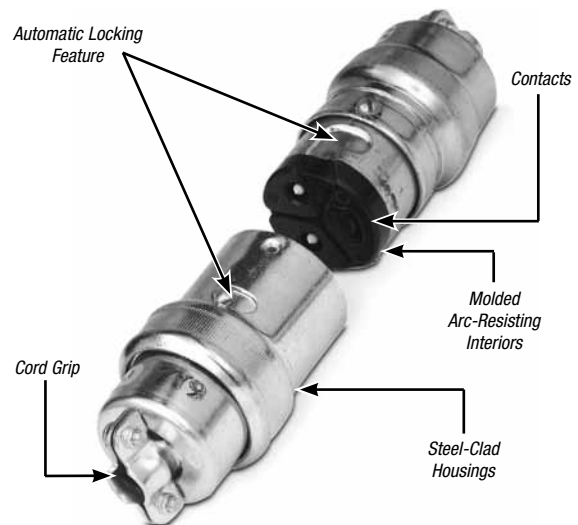
To install, line up the tabs and plug it straight in. External buttons or ribs lock with the mating internal housing automatically. When an Ever-Lok® connector plugs in, it stays in. Locked housings do the work so Ever-Lok® contacts can carry the load! A firm grip and a counter-clockwise reverse twist-release locking for easy removal.

Design Features

- 1. Automatic Locking** — Automatic locking feature mechanically attaches the plug casing to the receptacle or connector and eliminates strain on electrical contacts.
- 2. Positive Grounding** — Casings are positively grounded by means of phosphor-bronze ground straps integral with ground contacts. Equipment grounding is secured by separate set of contacts which “make first” and “break last” as required by UL.
- 3. Dust-Proof** — On clamp-type plugs and connectors, a washer is provided in each cap to be forced over the cord. This serves as a shield to prevent metal particles, dust, etc., from entering the interiors of plugs and connectors.

Bushing-type plugs and connectors are furnished with a gland nut and Neoprene cable bushing gland to exclude dust and moisture. A formed glide washer is also provided to facilitate tightening of the gland nut.

Receptacle covers are sealed to boxes by gaskets and have hinged flaps which are gasket-lined and equipped with strong springs to keep them closed and dust out.
- 4. Steel-Clad** — Plugs and connectors are plated steel. Plugs have encased locking spring in machine-assembled non-separable housings.
- 5. Cord Grip** — Plugs and connectors are provided with adjustable cord grips, preventing strains on connections.
- 6. Contacts** — Contacts are precision-made, self-wiping and self-aligning brass and nickel-plated brass.
- 7. Unit Assembly** — Contacts and terminals are permanently assembled in an arc-resisting composition body, permitting removal of interior as a unit for wiring. All connections are entirely enclosed, thus avoiding accidental short circuits and tampering by inexperienced personnel.
- 8. Handles Lined** — Shell handles have an HDPE liner to contain stray wire ends.
- 9. Interiors** — All interiors are molded arc-resisting composition.



DuraTite® and Ever-Lok® Locking Connections

DuraTite® line offers thermoplastic performance and Ever-Lok® interface.

Male Plugs



	250VAC RATING	RATING	CLAMP TYPE	MAX CABLE DIA.	BUSHING TYPE	CABLE BUSHING HOLE DIA.	HUB TYPE*	CONDUIT SIZE			
2P3W	15 AMP	20 Amp, 125VAC	8013	½"	8153	⅝"	8593 8593CTN**	½"			
		15 Amp, 250VAC						½"			
		10 Amp, 600VAC						½"			
		20 Amp, 125VAC						8013U1	8153U1	8593U1	½"
		15 Amp, 250VAC						8013U2	8153U2	8593U2	½"
		15 Amp, 277VAC						8013U3	8153U3	8593U3	½"
	15 Amp, 480VAC	8013U4	8153U4	Consult T&B Representative							
15 Amp, 600VAC	8013U5	8153U5	Consult T&B Representative								
30 AMP	30 Amp, 250VAC	8015	⅝"	8155	⅝"	8656	¾"				
	20 Amp, 600VAC										
3P4W	15 AMP	20 Amp, 125VAC	8018	½"	8158	⅙"	8594	½"			
		10 Amp, 250VAC									
		15 Amp, 250VAC									
	30 AMP	20 Amp, 600VAC	8014	⅝"	8154	¾"	8597 8657	½"			
		30 Amp, 250VAC						¾"			
	50 AMP	50 Amp, 250VAC	8314-S 8314	¾" 1⅝"	8354	1"	8396 8397	½"			
30 Amp, 250VAC		¾"									
30 Amp, 600VAC		¾"									

* Hub with clamp added at size.

** Accommodates rigid conduit or standard connectors for armored and non-metallic cable or flexible conduit.

Notes: (for Plugs and Connectors):

Cable Bushing — Oil-resistant Neoprene cable bushing regularly furnished with hole size as listed. Other hole sizes available at no extra cost, when specified on order. See page H-425 for available sizes. Bushing-type plugs and connectors can be furnished with adapters to accommodate rigid conduit or standard connectors for armored and non-metallic cable or flexible conduit. See page H-425.

"N" in catalog number refers to nickel-plated neutral pin replace.
Ex: 8013 with 8013N.

Special construction options for Ever-Lok® plugs include control Dummy Plugs™ for press lockout function. Consult Technical Services.

DuraTite® and Ever-Lok® Locking Connections

Female Connectors



CLAMP TYPE	MAX. CABLE RATING	BUSHING TYPE	CABLE BUSHING HOLE DIA.	HUB TYPE**	CONDUIT SIZE
8023	1/2"	8093	5/8"	8683N/8683CTN*	1/2"
8023U1	1/2"	8093U1	5/8"	8683U1/8683U1CT*	1/2"
8023U2	1/2"	8093U2	5/8"	8683U2	1/2"
8023U3	1/2"	8093U3	5/8"	8683U3	1/2"
Consult T&B Representative		Consult T&B Representative		Consult T&B Representative	
Consult T&B Representative		Consult T&B Representative		Consult T&B Representative	
8025	5/8"	8095	5/8"	8646	3/4"
8028	1/2"	8098	1 1/16"	8684	1/2"
8024	5/8"	8094	3/4"	8687/8687CT*	1/2"
				8647	3/4"
8324S	3/4"	8394	1"	8386	1/2"
				8387	3/4"

* Hub with clamp added at size.

** Accommodates rigid conduit or standard connectors for armored and non-metallic cable or flexible conduit.

DuraTite® and Ever-Lok® Locking Connections

Standard Service Female Receptacles

Power & High Voltage — Russellstoll® Pin & Sleeve Power Connectors



	250VAC RATING	RATING	FEMALE RECEPTACLE ONLY WITH FLAP COVER^	RECEPTACLE WITH BOX FSWS-62*	2-GANG†
2P3W	15 AMP	20 Amp, 125VAC			
		15 Amp, 250VAC	8003	8083	8128
		10 Amp, 600VAC			
		20 Amp, 125VAC	8003U1	8083U1	8128U1
		15 Amp, 250VAC	8003U2	8083U2	8128U2
		15 Amp, 277VAC	8003U3	8083U3	8128U3
3P4W	30 AMP	15 Amp, 480VAC	8003U4	8083U4	8128U4
		15 Amp, 600VAC	8003U5	8083U5	8128U5
		30 Amp, 250VAC	8005	8030	8131
		20 Amp, 600VAC			
		20 Amp, 125VAC	—	—	—
		10 Amp, 250VAC	8008	8084	8129
3P4W	15 AMP	15 Amp, 250VAC	—	—	—
		10 Amp, 600VAC	—	—	—
		20 Amp, 600VAC	—	WITH FS BOX	WITH FD BOX
		30 Amp, 250VAC	8004	8031	8132
		50 Amp, 250VAC	—	WITH FD BOX	WITH FD BOX
		30 Amp, 250VAC	8304	8331	8334
3P4W	50 AMP	30 Amp, 600VAC	—	—	—

Notes:

^ For FS, FD, FSWS, FDWS and similar conduit fittings.

* Receptacle with box and cover.

** Provided with FDWS62 Box.

† Two-gang receptacles can also be provided in mixed configurations including NEMA bladed, etc. Consult Technical Services.

Male inlets (reversed contacts service): Use receptacle mountings but accept standard female connector.

Horsepower ratings:

½ hp, 1-phase, 230VAC
1 hp, 3-phase, 115VAC

Note: Standard Ever-Lok receptacles also accept DuraTite® plugs.

DuraTite® and Ever-Lok® Locking Connections

Reverse Service Male Receptacles



Power & High Voltage — Russellstoll® Pin & Sleeve Power Connectors

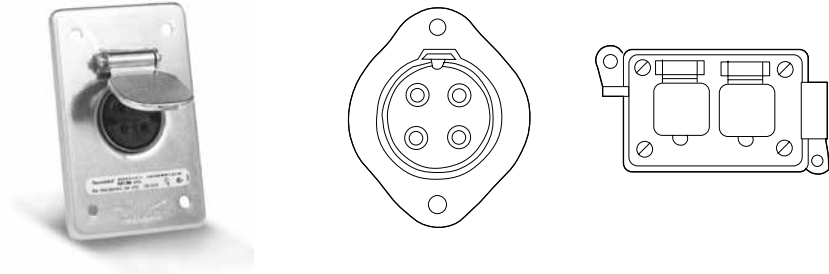
MALE INLET	MALE INLET WITH BOX**
8143	8143D
8143U1	8143U1D
8143U2	8143U2D
8143U3	8143U3D
CONSULT YOUR THOMAS & BETTS REPRESENTATIVE	CONSULT YOUR THOMAS & BETTS REPRESENTATIVE
CONSULT YOUR THOMAS & BETTS REPRESENTATIVE	CONSULT YOUR THOMAS & BETTS REPRESENTATIVE
8146	CONSULT YOUR THOMAS & BETTS REPRESENTATIVE
—	—
8144	8144D
—	—
8147	8147D
—	—
8374	8374
—	—

Specifications

- Receptacle Housing: Plated steel; receptacle with cover only; furnished with 6-52 mounting screws; for mounting on switch box or outlet box, use adapter plate 8091A; see **page H-424**
- Back Boxes: Cast aluminum, epoxy powder-coat finish; flap and screw caps aluminum, corrosion-resistant copper-free alloy or steel, CAD plated
- Plug: All cable entry styles of plugs with equivalent ratings fit above receptacles
- Conduit Boxes: Type FSWS-62 or FDWS-62 standard, cast aluminum; additional boxes available; see **page H-423**
- Gang Type: Can be furnished in gang or tandem units and in combination with other FS and FD devices; see **page H-423**
- Outlets: Unless otherwise specified, furnished with one ¼" outlet; additional outlets charged extra, specific size and location; consult Technical Services

DuraTite® and Ever-Lok® Locking Connections

Standard Service Female Receptacles



POLES/WIRES	RATING	SINGLE RECEPTACLE		FLANGED PANEL MOUNT RECEPTACLE	DUPLEX RECEPTACLE	
		RECEPTACLE ONLY	WITH BACK BOX		RECEPTACLES ONLY	WITH BACK BOX
2P3W	10 Amp, 250VDC	8703	8753	8943	8733	8773
	20 Amp, 250VAC*					
	20 Amp, 125VAC					
3P4W	15 Amp, 250VAC	8703U1	8753U1	8943U1	8733U1	8773U1
	10 Amp, 125VDC	8703U2	8753U2	8943U1	8733U2	8773U2
4P5W	20 Amp, 250VAC**	8704	8754	8944	8734	8774
	10 Amp, 125VDC	8705	8755	8945	8735	8775
	20 Amp, 250VAC**					

Notes:

* ½ hp, 1-Phase, 230VAC
 **1 hp, 3-Phase, 115VAC

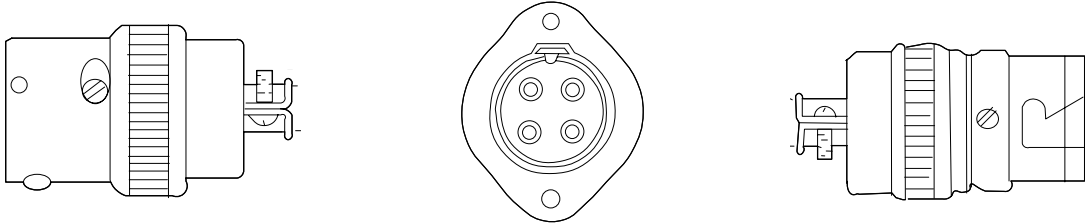
Specifications

- Receptacle Housing: Heavy gauge steel, plated
- Back Boxes: Type FSWS-62 standard, cast aluminum; Additional boxes available, see **page H-423**
- Gang Type: Can be furnished in gang or tandem units and in combination with other FS and FD devices; see **page H-423**
- Outlets: Standard, one ¼" top or bottom; additional outlets charged extra; see boxes listed on **page H-423**
- Plug and Connector Housings: Steel, plated
- Cable Diameter:
Clamp Type: .500" max. cable diameter
- Bushing Type:
2P3W — .563" diameter standard
3P4W — .281" diameter standard
4P5W — .594" diameter standard
- Cable Bushing: Oil-resistant Neoprene cable bushing regularly furnished with hole size as listed. Other hole sizes available at no extra cost when specified on order; see **page H-425** for available sizes

DuraTite® and Ever-Lok® Locking Connections

Standard Service Plugs and Connectors

Reverse Service

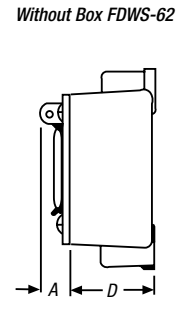
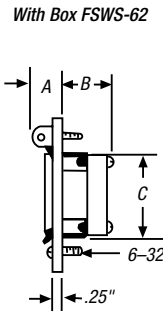
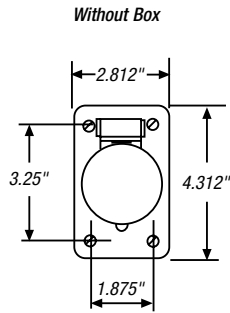


CLAMP TYPE^		MALE FLANGED PANEL MOUNT	CLAMP TYPE^	
MALE PLUG	FEMALE CONNECTOR		FEMALE PLUG	MALE CONNECTOR
8713	8723	8943R	8713R	8723R
8713U1	8723U1	8943U1R	8713U1R	8723U1R
8713U2	8723U2	8943U2R	8713U2R	8723U2R
8714	8724	8944R	8714R	8724R
8715	8725	8945R	8715R	8725R

^ Plugs and connectors are also available as bushing or hub type similar to those in standard Ever-Lok. Please consult your Thomas & Betts representative.

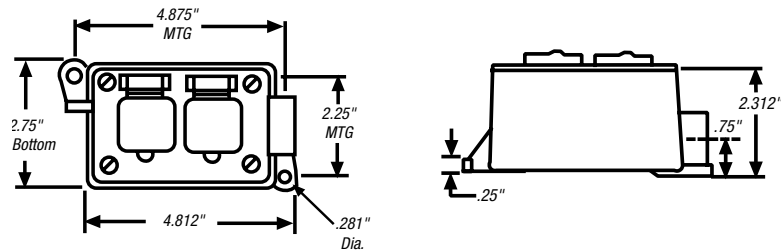
DuraTite® and Ever-Lok® Locking Connections

Female Receptacles and Reverse Service

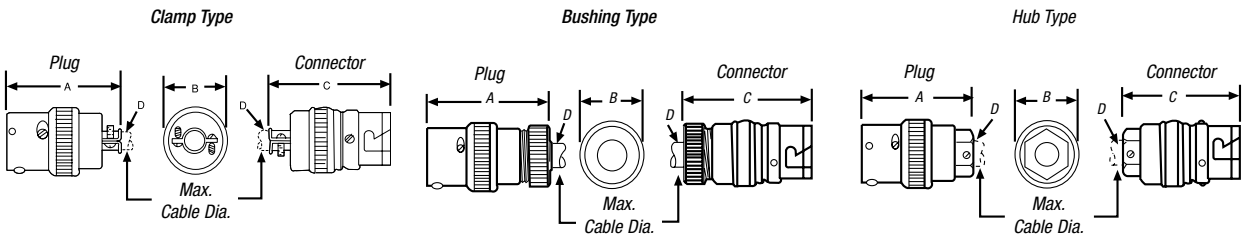


SIZE	STANDARD SERVICE				REVERSE SERVICE			
	A	B	C	D	A	B	C	D
Standard								
10 Amp								
15 Amp	.875"	1.375"	2.375"	2.313"	.875"	2.000"	1.750"	2.937"
20 Amp								
30 Amp	.875"	1.500"	2.875"	2.937"	.875"	1.500"	2.875"	2.937"
50 Amp	1.470"	1.875"	2.125"	2.937"	1.470"	1.875"	2.125"	2.937"
Midget	.687"	1.810"	1.280"	NA	.687"	1.810"	1.280"	NA

Midget Duplex



Plugs and Connectors



SIZE	CLAMP TYPE				BUSHING TYPE				HUB TYPE			
	A	B	C	D	A	B	C	D	A	B	C	D
Standard												
15-20 Amp	3.125"	1.750"	3.187"	.500"	3.250"	1.750"	3.375"	.750"	3.125"	1.750"	3.187"	.500"
30 Amp	3.437"	2.125"	4.250"	.625"	3.750"	2.125"	4.500"	1.125"	3.500"	2.125"	4.250"	.750"
50 Amp	4.750"	2.125"	4.750"	1.125"	4.875"	2.125"	4.875"	1.125"	4.500"	2.125"	4.625"	.750"
Midget	2.875"	1.440"	2.875"	.500"	3.000"	1.440"	3.000"	.625"	2.875"	1.440"	2.875"	.500"